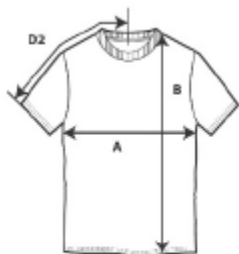


Die angegebenen Größen unterliegen den üblichen Toleranzen und dienen nur zur Orientierung.

The sizes given are subject to the usual tolerances and are for guidance only.



SPECIFICATIONS

Centimeters	Tol+/-	XS	S	M	L	XL
Chest (A)	2.540	35.560	40.640	43.180	45.720	48.260
Length from HPS (B)	2.540	45.720	52.070	55.880	59.690	63.500
Sleeve length (Center back) (D2)	1.905	29.210	34.290	36.830	39.370	41.910
Inches	Tol+/-	XS	S	M	L	XL
Chest (A)	1.000	14.000	16.000	17.000	18.000	19.000
Length from HPS (B)	1.000	18.000	20.500	22.000	23.500	25.000
Sleeve length (Center back) (D2)	0.750	11.500	13.500	14.500	15.500	16.500